

## MAIN FEATURES

- Risk evaluation by **processes, places, equipment, substances and products**
- Manage risk, risk assessment and risk countermeasures
- Management of homogeneous exposure groups
- Audits, inspections, compliance
- Medical protocols, training, personal protective equipment, work instructions and much more!
- Preventive planning and follow up activities
- Risk evaluation version control
- Evaluation approval and planning activities workflow
- **Cloud or On-Premise deployment**

## ADDITIONAL FEATURES

Integrate audit and prevention into your organization.

Define and use different roles/user according with their profiles.

Configure features by user.

Integrate with 3<sup>rd</sup> party solutions.

Retrieve data from other resources such as HRM, CRM and ERP systems in order to assure data integrity.

Centralized data, enhance analysis and reporting

Get unique access to information anywhere within the organization.

Optimize processes and reduce costs.

Reduce paperwork and manual processes.

Customize corporate workflows in the organization using Plinius Studio.

Secure sensitive data.

Encrypt sensitive information and control user access.

Multi-user, multi-language, multi-location

Multi-database support

Access via LAN (Windows client), cloud services or web.



# Audit, Process, Environmental, Health and Safety Inspection Management

Plinius Inspection Management is the premier audit, process, environmental, health and safety inspection solution for an integrated management of occupational, governmental permits, regulations, and enterprise risks.

It enhances the management of **preventative** plans while maintaining effective cost control.

Plinius focuses on effective management of occupational and enterprise risks within the organization addressing the needs from occupational and enterprise concerns such as audit and process management to environmental, health and safety concerns or requirements.

Plinius includes **four different standard risk assessment matrices** which can be used dynamically by choosing the appropriate one for each risk.

The **planning module** provides the ability to follow up and control actions by way of risk assessments and prevention needs.

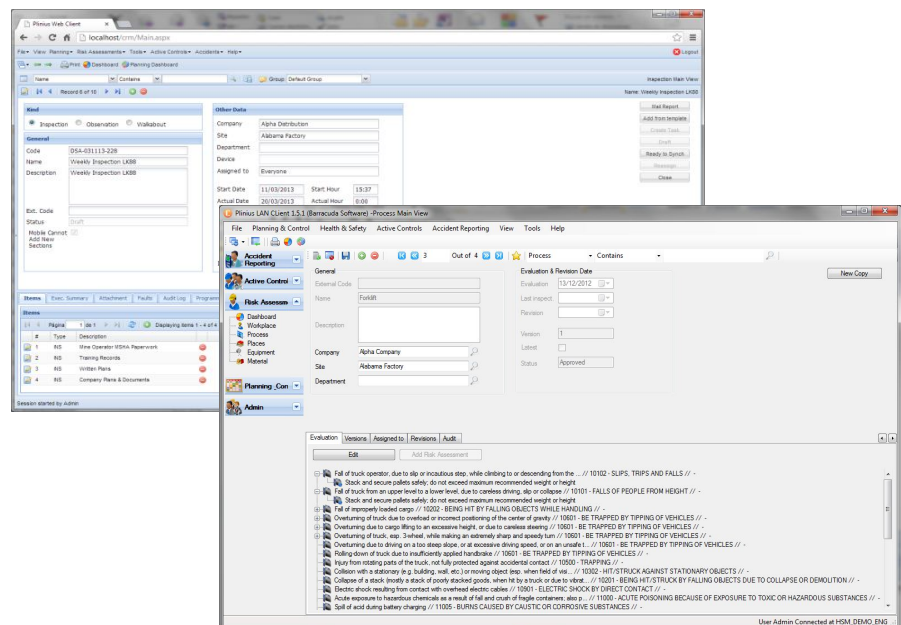
Plan your workers training; assign personal protective equipment, track inspections, audits and corrective actions, etc...

The Plinius application's powerful and flexible risk evaluation module provides the ability to implement the 5M methodology<sup>1</sup>. It evaluates risks by processes and allows effective management of risk evaluation associated with places, work equipment, products and substances within the organization.

Optionally, assign risk evaluation to all workers who work in a facility thereby simplifying evaluation by avoiding data duplication.

**Plinius is the premier solution for management, audit and continual process improvement making occupational and enterprise risk management easier and efficient.**

For example, Plinius can assist an organization in obtaining and retaining **ISO 9001, ISO 14001, OSHA18001 certifications** and many more!



(1) 5M Methodology is also known as the Ishikawa diagram or the Ishikawa fishbone. Ishikawa, Kaoru (1968). Guide to Quality Control. Tokyo: JUSE.

## CONSULTING PARTNER:



**Total Systems, Inc.**  
Solutions Designed for Growth™

- 888-999-8741x1241
- www.totalsystemsinc.com
- info@totalsystemsinc.com
- sales@plinius.us

# MOBILE INSPECTIONS

## MAIN FEATURES

### INSPECTIONS

- Create inspections from scratch by using predefined templates.
- Get media support by using camera and voice recording (\*).

### Plinius INTEGRATION

- Customize organization and facilities in Plinius.
- Schedule and send inspections to mobile devices and capture results when complete.
- Program periodic inspections throughout the organization.
- Use the risk evaluation structure to analyze inspections.
- Get accurate status inspections by synchronizing with Plinius.
- Get an on-site PDF report automatically delivered, if required (\*\*).

### SYNCHRONIZATION

- 3G/4G or WIFI required for data synchronization.

(\*) When available on device.

(\*\*) Without Plinius depends on availability. Charges may apply for the PDF report.

## CONTACT



+34 932 477 186

info@barracudasoft.com

www.plinius.us

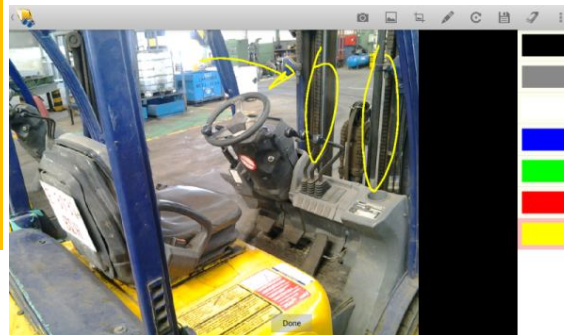
C/ Girona 60 Ppal. 1ª

Barcelona • Spain

08009 Barcelona

Code: 201303121143 \$USD  
Name: Daily Forklift Audit  
Description: Industrial Trucks-Forklifts, in this field you can write along description, remarks and general comments.  
Company: Alpha Inc.  
Site: Alabama Factory  
Area:   
Start date: Mar 12, 2013 Time: 5:42 PM  
Actual date: Mar 13, 2013 Time: 11:00 AM

- Assign master inspections to spread all over your organization.
- Conduct in-field/onsite work
- Maintenance, security and occupational/enterprise inspections
- Observe individual tasks
- Identify defined processes, places, work equipment, substances and products from occupational or enterprise risk assessments.



- Synchronizes with Plinius HSM
- Get your organization chart, company, sites and areas.
- Schedule your periodic inspections in Plinius and send them to mobile devices.



## ENGAGING VISUAL INTERFACE TO ENHANCE USER EXPERIENCE

Type: Inspection  
Description: Industrial Trucks-Forklifts

Are only drivers authorized by the employer and trained in the safe operations of industrial trucks permitted to operate such vehicles? Methods must be devised to train operators in safe operation of powered industrial trucks.

Does employer ensure that each powered industrial truck operator is competent to operate a powered industrial truck safely, as demonstrated by the successful completion of required training and evaluation in accordance with 1910.178(j)-Operator Training?

Is substantial overhead protective equipment provided on high lift rider equipment?

Are the required lift truck operating rules posted and enforced?

Is directional lighting provided on each industrial truck that operates in an area with less than 2 footcandles per square foot of general lighting?

Does each industrial truck have a warning horn, w... evaluated the effectiveness of the actions taken?

Are the brakes on each industrial truck capable of complete and safe stop when fully loaded?

Will the industrial truck's parking brake effectively... maintained appropriate records of education, training, skills and experience (see 4.2.4)?

Are industrial trucks operating in areas where flammable dust or ignitable fibers may be present approved for such locations?

This is a question yes-no Enter value

This is a question to enter a value Enter value

This is a question to enter two values Enter value

## CAMERA AND VOICE RECORDING INTEGRATION

- Take photos and record voice notes on each finding
- Edit photos to document details and include comments
- Include photos in inspections and send them to Plinius.

## SAFETY INSPECTOR DISTRIBUTION AND LICENSING

Plinius Inspector is a part of PLINIUS, distributed through Google Play and iTunes. Plinius Inspector is an app that provides the ability to conduct onsite inspections.

Minimum system requirement is Android 3.0 (honeycomb) or higher and Plinius Web Server to synchronize with Plinius.